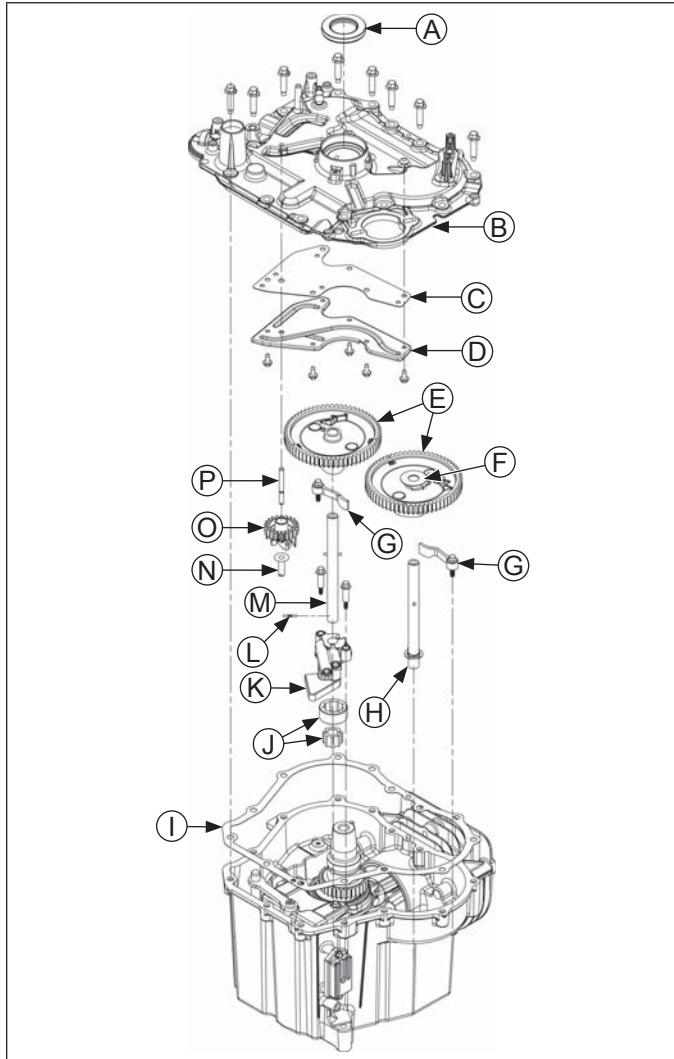


Reassembly

Cam/Closure Plate Components



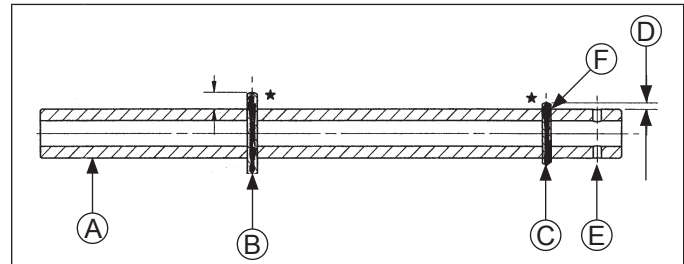
A	Oil Seal	B	Closure Plate
C	Oil Passage Cover	D	Gasket
E	Cam Gears	F	Thrust Washer
G	Cam Levers	H	Cam Shaft (Exhaust)
I	Closure Plate Gasket	J	Gerotor Gears
K	Oil Pump	L	Cam Shaft Pin
M	Cam Shaft (Intake)	N	Regulating Pin
O	Governor Gear	P	Governor Gear Shaft

Install Cam Levers

Install two cam levers as shown. Dimple for seating push rod must face up. Secure each cam lever using an M6 screw. Torque screws to 7.5 N·m (65 in. lb.). Lubricate dimple and bottom side of cam lever with light grease or oil.

Install Exhaust Cam Shaft and Cam Gear

Drive Pin Locations for Exhaust Cam Shaft



A	Exhaust Cam Shaft	B	3 mm Diameter Pin
C	2.5 mm Diameter Pin	D	1.86 mm
E	Hole Location 1	F	Hole Location 2

- If drive pins were removed from exhaust cam shaft, follow same procedure used earlier for intake cam shaft and reinstall them.
- Apply a dab of grease to formed groove in thrust washer. Slide washer onto cam shaft so short drive pin is seated in groove. Grease will hold washer in position. Pivot exhaust cam lever toward push rod bore, then insert cam shaft into counterbore of crankcase. Make sure pin stays in groove of thrust washer.
- Lubricate cam surfaces of cam gears with light grease or oil.
- Assemble and install ACR (automatic compression release) into exhaust cam gear if removed for servicing.
 - Install spring onto ACR weight with loop around post, and formed upper leg hooked behind upper section.
 - Install ACR assembly into hole of exhaust cam gear and hook long leg behind notched tab.
- Lift exhaust cam lever and install exhaust cam gear with assembled ACR onto cam shaft, engaging slot with upper drive pin. Rotate gear and shaft so EX timing mark on cam gear is in 8 o'clock position. Install thrust washer onto cam shaft.

Install Intake Cam on Cam Shaft

NOTE: Cam gear assemblies may contain either two or four rivets.

Lift intake cam lever and install intake cam gear onto intake cam shaft, engaging slot with upper drive pin. Rotate gear and shaft so IN timing mark on cam gear is in 4 o'clock position. Early models only: install thrust washer (if used originally), onto cam shaft.

Install Crank Gear

Orient crankshaft so key is in 12 o'clock position. Hold crank gear with timing marks visible and slide it onto crankshaft and key, so timing marks on crank gear align with timing marks on cam gears.